

Mossy Mossy Month of May

Ojai Basin conditions, spring 2023

OBGMA

Ojai, California

Jordan Kear, PG, CHG

25 May 2023



Year to Date Rainfall Totals



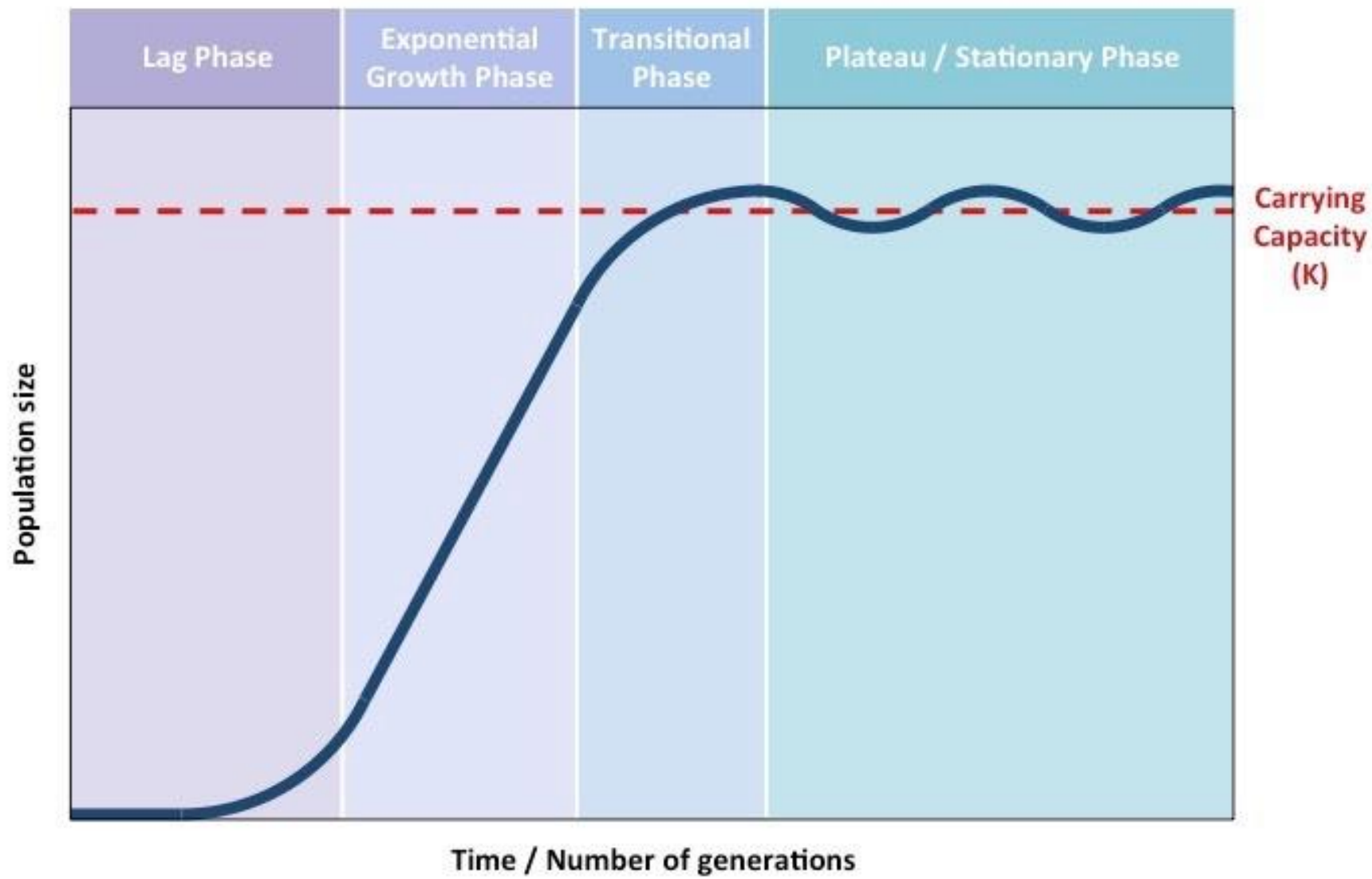
How much is this?

- 41.01 inches on valley floor to date
- 71.76 inches on ridgetop
- 198.3% of average

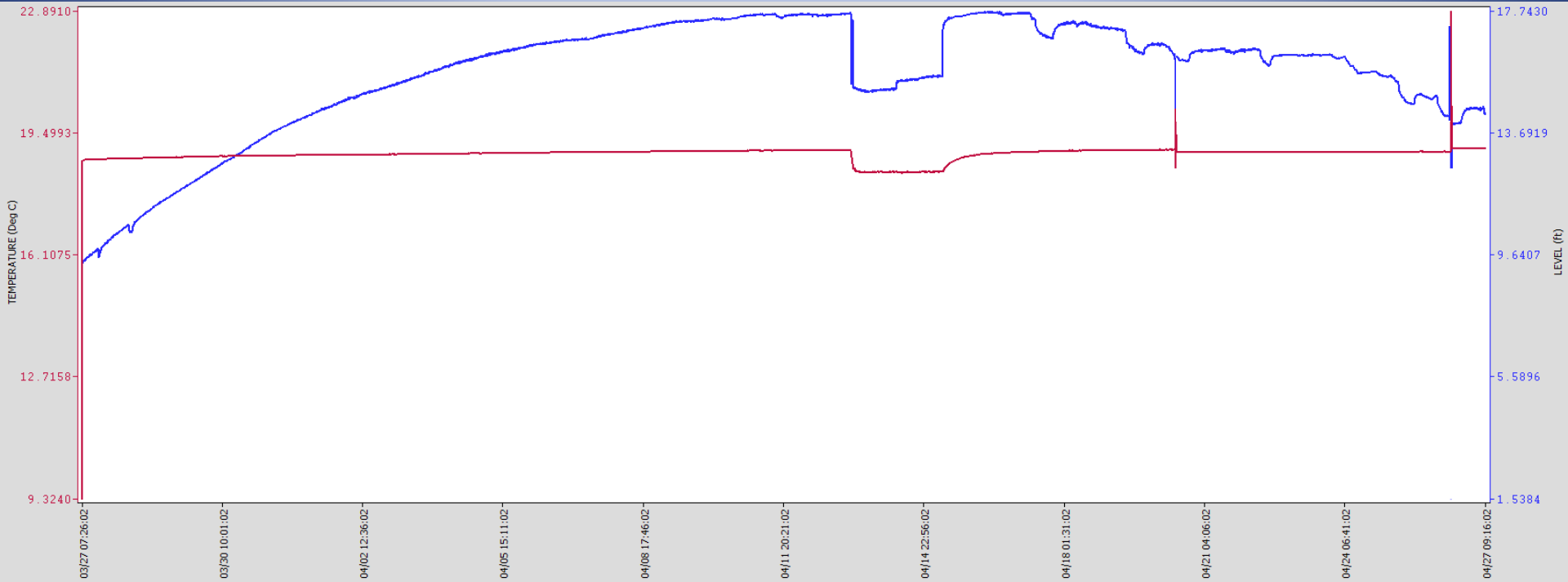
- Driest April on record
(well, a tie... at zero)

How has the basin responded?

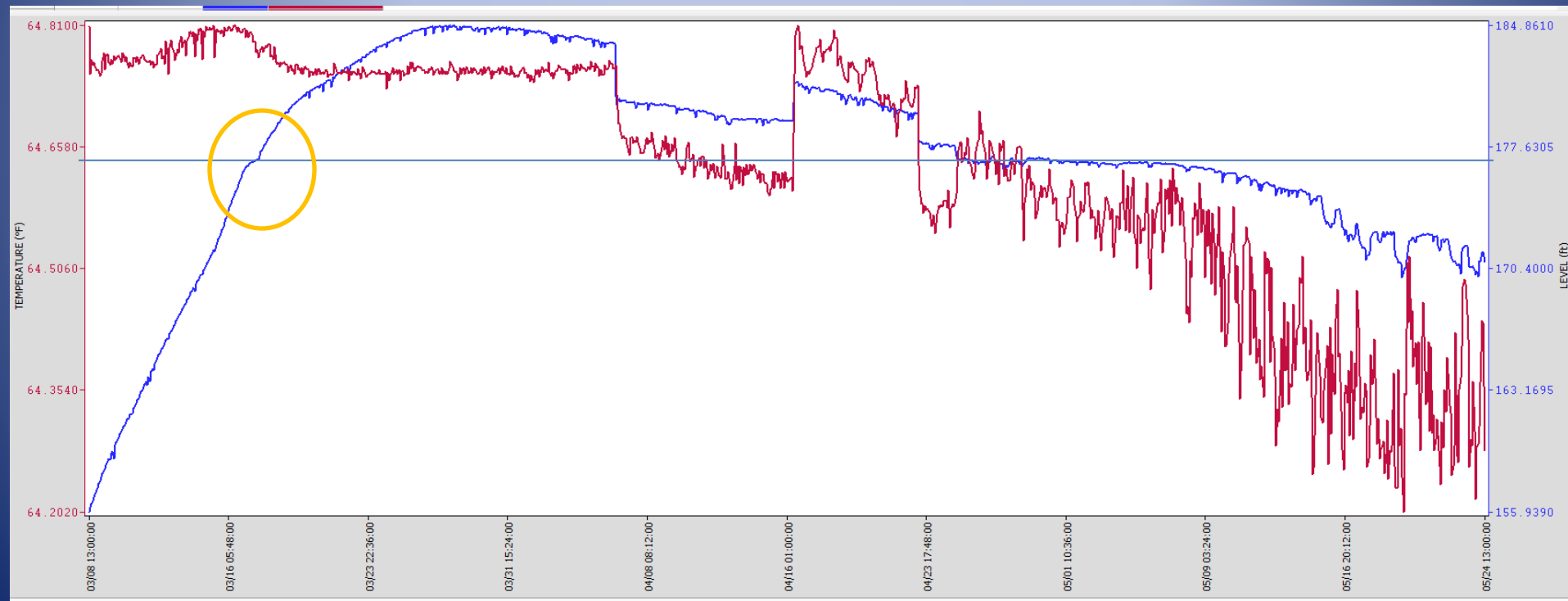
- Surface water continuous flow from Late December through late January
- Continuous flow returned with February 24 storms (Reeves Creek now discontinuous)
- Likely full with a peak on April 13
- Historic High?



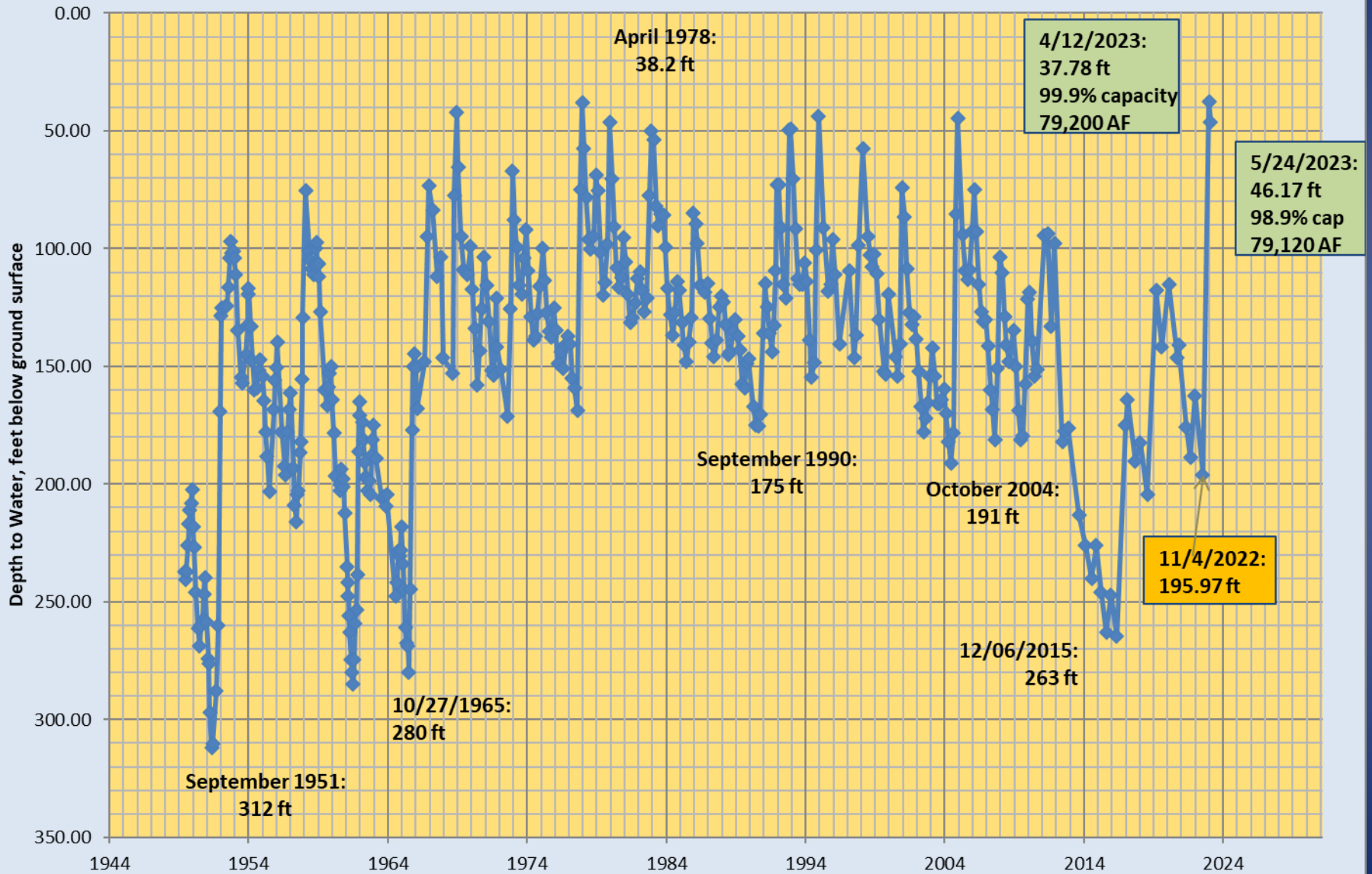
Key Well – Elrod – Peaking over April 2023



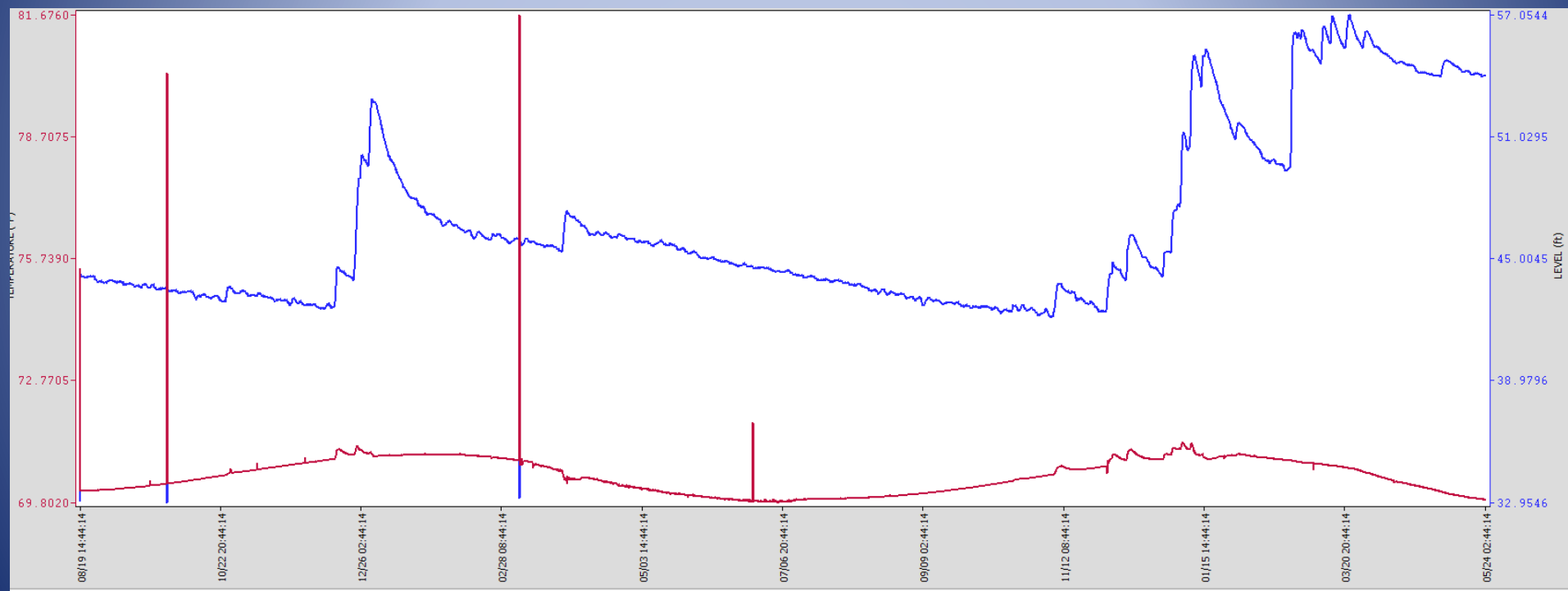
Lagomarsino Artesian pressure



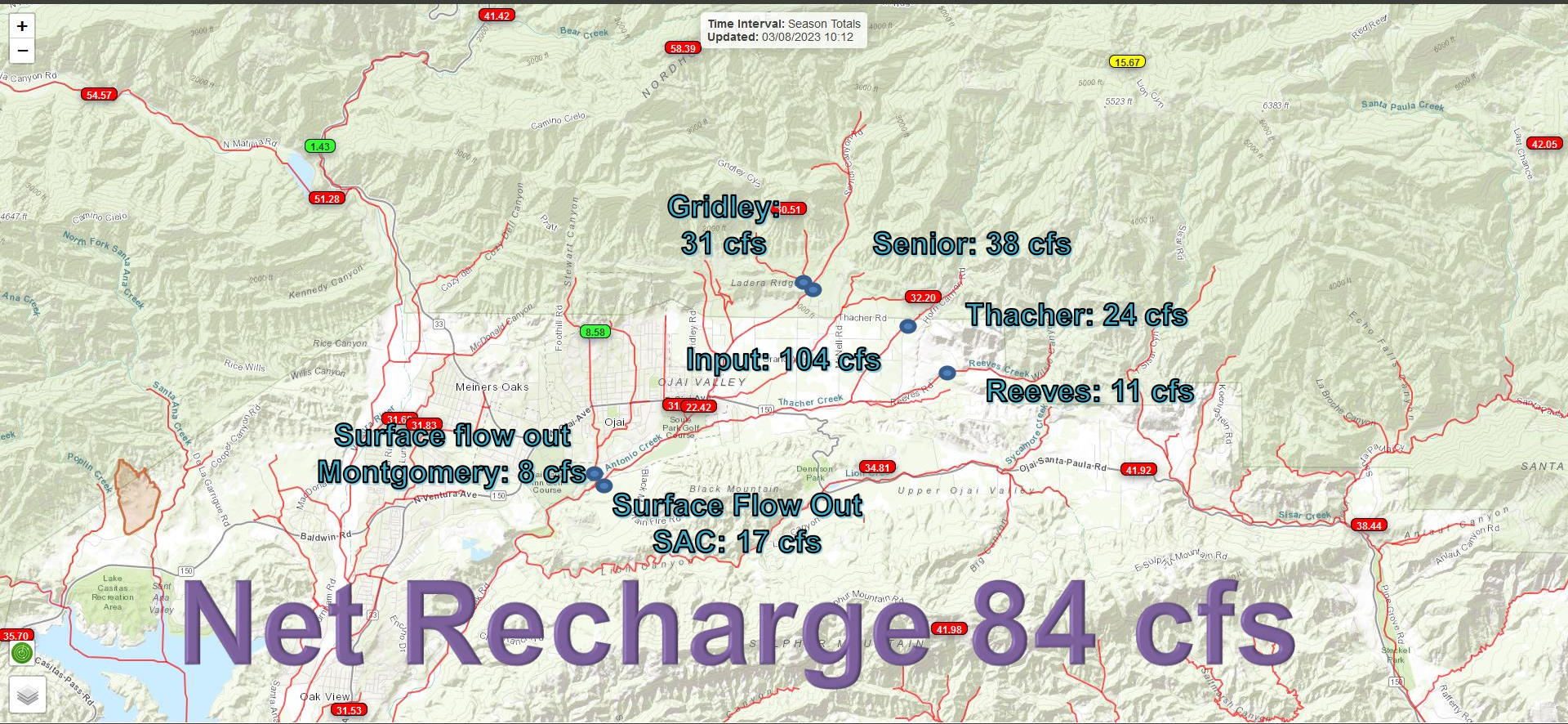
Depth to Water: Ojai Basin Key Well Area 04N/22W-5L8 & 5L5 (Carne and Grand)



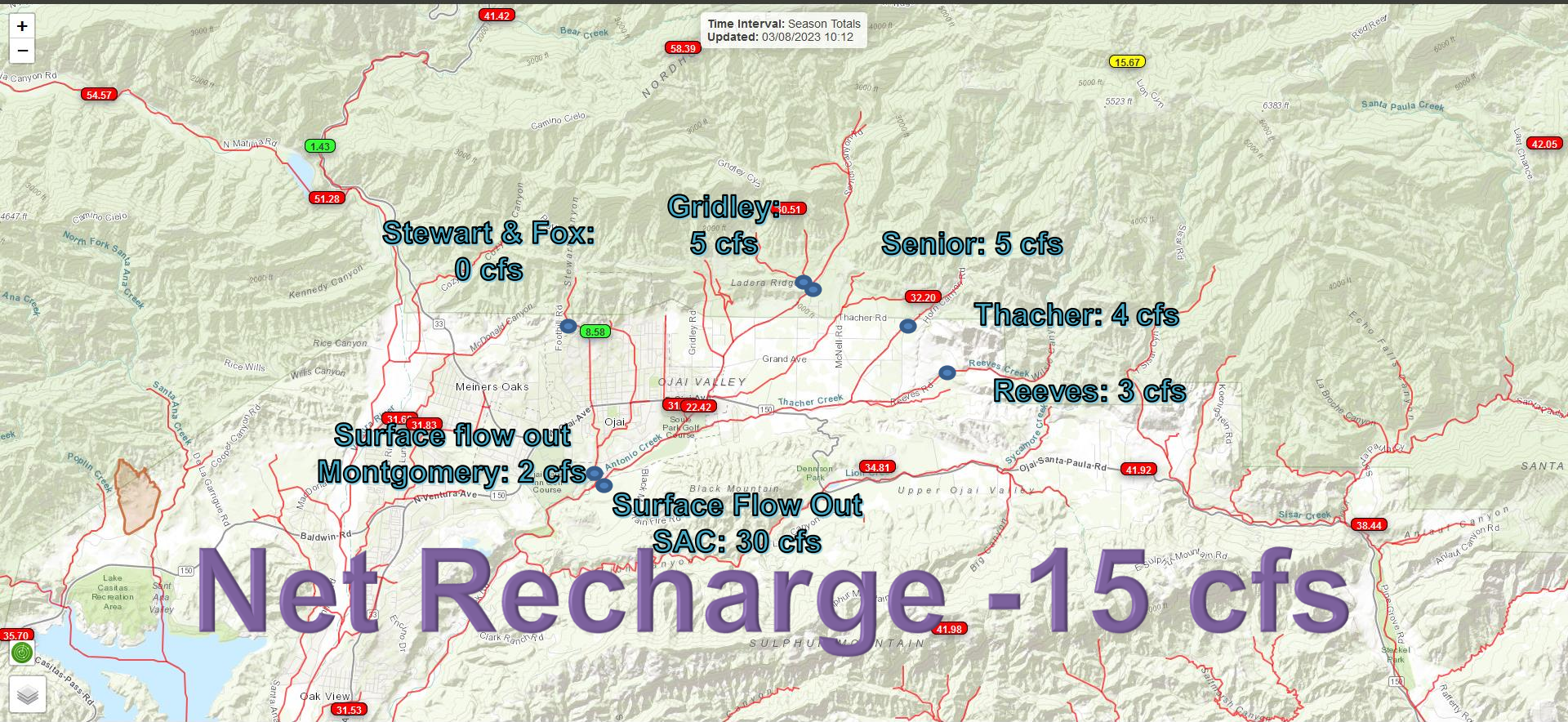
Perched system South Fulton Street DDMW



Inflow 6 March 2023



Inflow 24 May 2023



30+/- artesian wells @ 0.1 cfs=3 cfs?

Perched system contribution = 12 cfs?



**SPRING 2023 PEAK
GENERALIZED PERCHED AQUIFER
GROUNDWATER CONTOURS**

**UPPER
VENTURA RIVER
GROUNDWATER
BASIN**

CALIFORNIA
33

CALIFORNIA
150

OVSD No. 6
(Spring 2023 High:
+812 ft AMSL)

OVSD No. 10
(Spring 2023 High:
+776 ft AMSL)

OVSD No. 8
(Spring 2023 High:
+774 ft AMSL)

OVSD No. 11
(Spring 2023 High:
+805.5 ft AMSL)

**SOUTH-
CENTRAL
DDMW**
(Spring 2023 High:
+739 ft AMSL)

HANSEN

LAGOMARSINO

MUTUAL

**MUTUAL
GROUNDWATER
BASIN**

Mont. Cr.

San Antonio Creek

*Thach
SANTA*

Algae in Gridley above confluence



San Antonio Creek at Ladera



Thacher Creek near basin entry



Reeves Creek near basin entry



San Antonio Creek at Grand



Downstream from Grand



Thacher at Boardman Road



Artesian Well near Boardman and Ojai Avenue



Creek near Daly Park



Flow increasing through city





Outflow Point



SAC at Old Creek Road

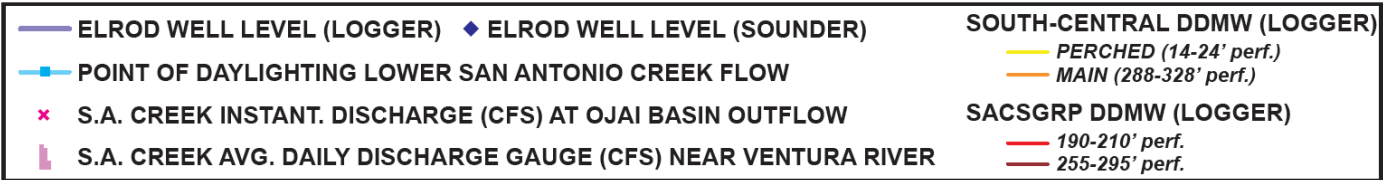
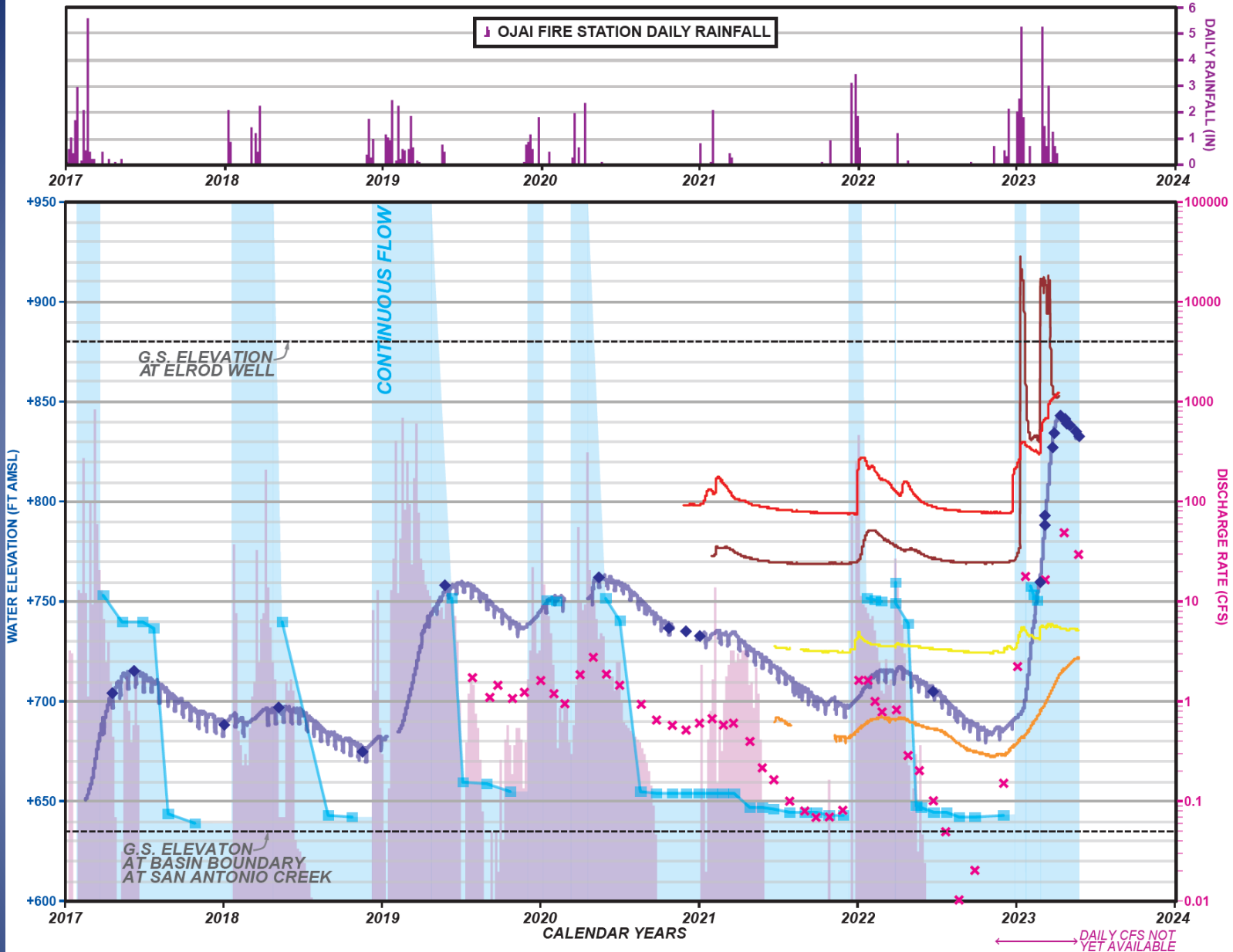


SAC at Ventura River



Artesian Flow in Monitoring Well





Forward

- Better estimates of perched system aquifer
Storativity and transmissivity
Extent and gradient
- Water quality in wells and creeks
- Replace logger in SAC near discharge