

**Recover...Recharge...Relax?  
Ojai Basin Conditions  
Water Year 2022-23**

**OBGMA  
Ojai, California**

**Jordan Kear, PG, CHG  
6 December 2022**



# 2022-2023

# Water year to date

- 2.68 inches on valley floor
- 6.05 inches on Nordhoff Ridge

## DAILY RAINFALL REPORT

Please give the report a few seconds to load

EXPORTED FROM VCPWA-WATERSHED PROTECTION HYDROLOGIC DATA SERVER

REQUESTED: 12/06/2022 12:25:49

REQUESTED DAILY RAINFALL REPORT FOR STATION: 0300

PERIOD OF RECORD: 2022-10-01 to 2023-10-01

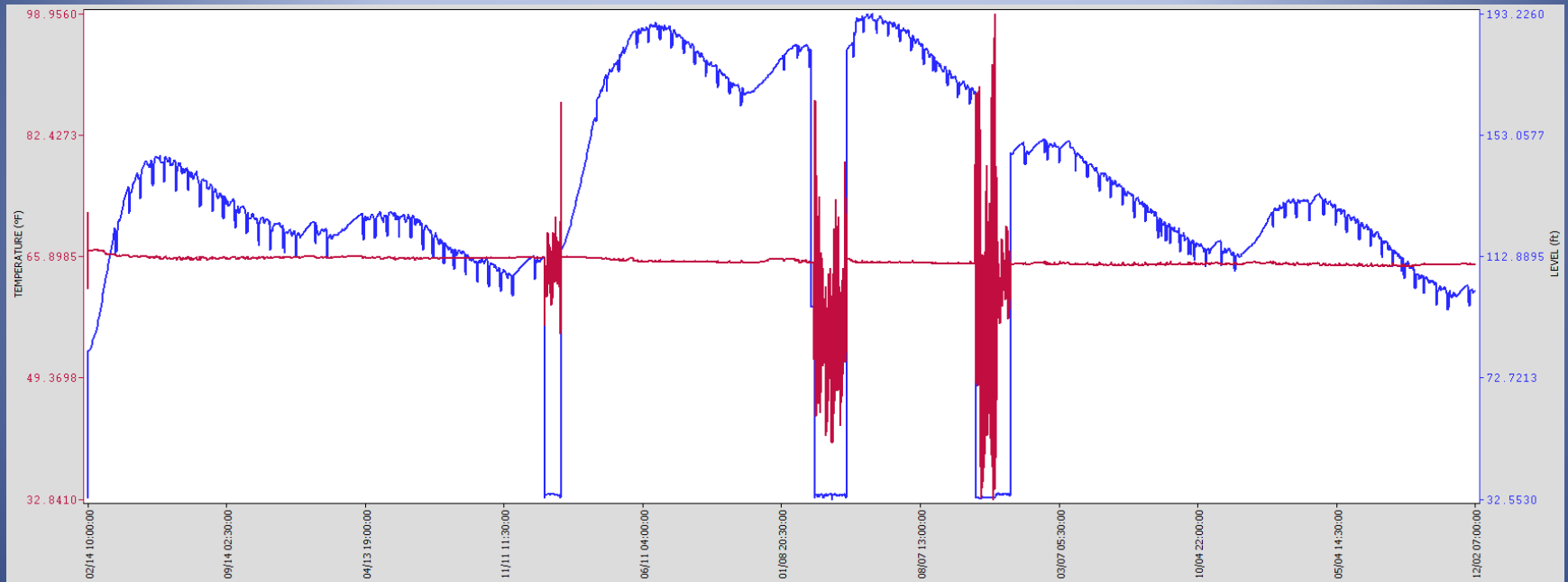
NOTE: The totals reported are for 24 hours ending at 08:00 of day reported.

### DAILY RAINFALL DATA

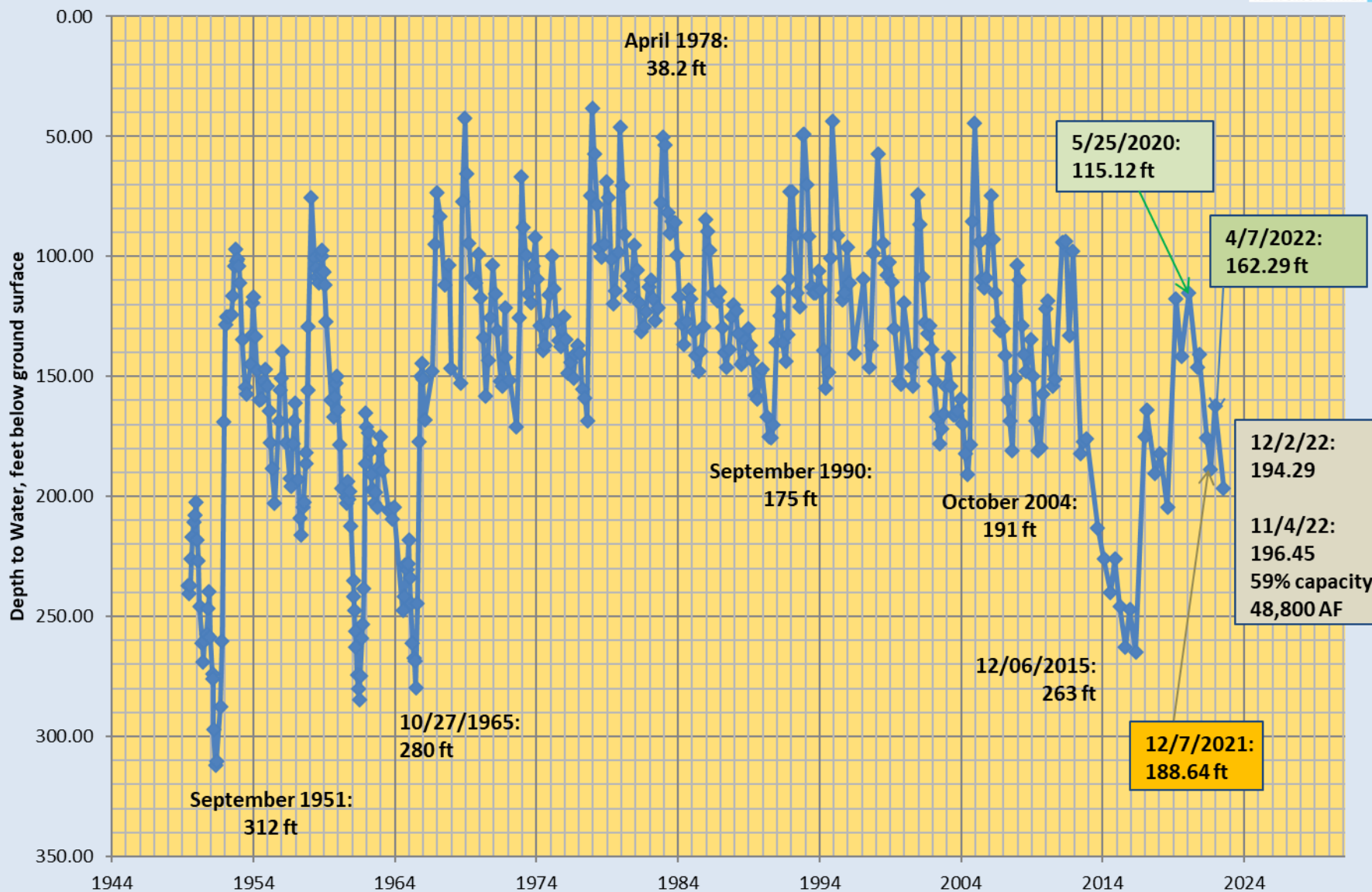
STATION:	0300		Djal-County Fire Station						
STATION TYPE:	Non-Standard Recorder								
LATITUDE:	34° 26' 53.0" N				LONGITUDE:	119° 13' 52.7" W			
	OCT	NOV	DEC	JAN	FEB	MAR	APR	MAY	JUN
1	-	-	-	M	M	M	M	M	M
2	-	-	0.53++	M	M	M	M	M	M
3	-	-	0.52++	M	M	M	M	M	M
4	-	-	0.32++	M	M	M	M	M	M
5	-	-	M	M	M	M	M	M	M
6	-	-	M	M	M	M	M	M	M
7	-	0.01++	M	M	M	M	M	M	M
8	-	0.59++	M	M	M	M	M	M	M
9	-	0.69++	M	M	M	M	M	M	M
10	-	-	M	M	M	M	M	M	M
11	-	-	M	M	M	M	M	M	M
12	-	-	M	M	M	M	M	M	M
13	0.01++	-	M	M	M	M	M	M	M
14	-	-	M	M	M	M	M	M	M
15	-	-	M	M	M	M	M	M	M
16	0.01++	-	M	M	M	M	M	M	M
17	-	-	M	M	M	M	M	M	M
18	-	-	M	M	M	M	M	M	M
19	-	-	M	M	M	M	M	M	M
20	-	-	M	M	M	M	M	M	M
21	-	-	M	M	M	M	M	M	M
22	-	-	M	M	M	M	M	M	M
23	-	-	M	M	M	M	M	M	M
24	-	-	M	M	M	M	M	M	M
25	-	-	M	M	M	M	M	M	M
26	-	-	M	M	M	M	M	M	M
27	-	-	M	M	M	M	M	M	M
28	-	-	M	M	M	M	M	M	M
29	-	-	M	M		M	M	M	M
30	-	-	M	M		M	M	M	M
31	-	-	M	M		M		M	
TOTAL	0.02	1.29	1.37	0.00	0.00	0.00	0.00	0.00	0.00

Warning: ++ - These data are preliminary and are subject to revision.

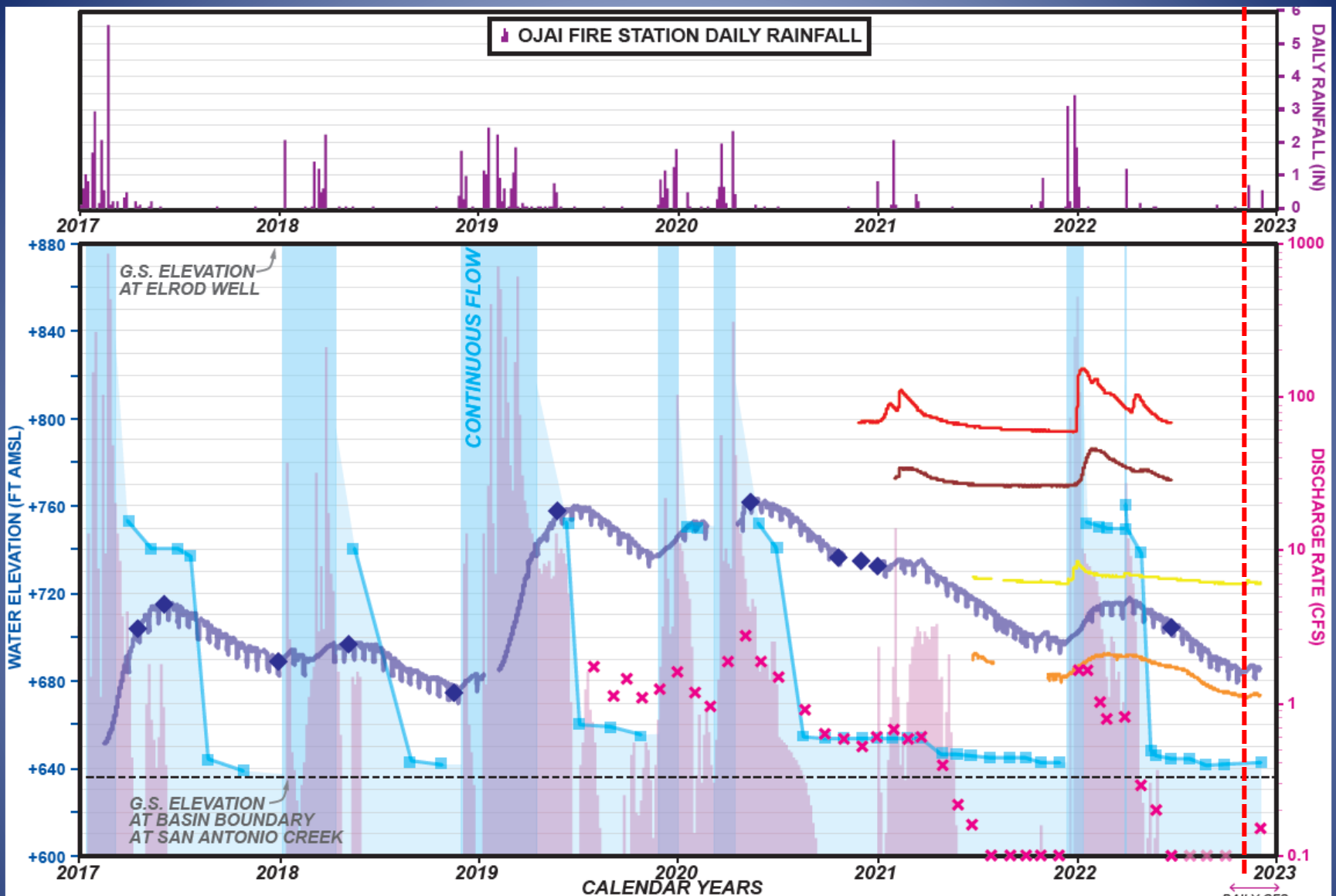
# Elrod Well through December 2



# Depth to Water: Ojai Basin Key Well Area 04N/22W-5L8/5L5 (Carne and Grand)



**OJAI FIRE STATION DAILY RAINFALL**



- |  |                              |                                    |
|--|------------------------------|------------------------------------|
| — ELROD WELL LEVEL (LOGGER)                                      | ◆ ELROD WELL LEVEL (SOUNDER) | <b>SOUTH-CENTRAL DDMW (LOGGER)</b> |
| — POINT OF DAYLIGHTING LOWER SAN ANTONIO CREEK FLOW              |                              | — PERCHED (14-24' perf.)           |
| × S.A. CREEK INSTANT. DISCHARGE (CFS) AT OJAI BASIN OUTFLOW      |                              | — MAIN (288-328' perf.)            |
| █ S.A. CREEK AVG. DAILY DISCHARGE GAUGE (CFS) NEAR VENTURA RIVER |                              | <b>SACSGRP DDMW (LOGGER)</b>       |
|  |                              | — 190-210' perf.                   |
|  |                              | — 255-295' perf.                   |







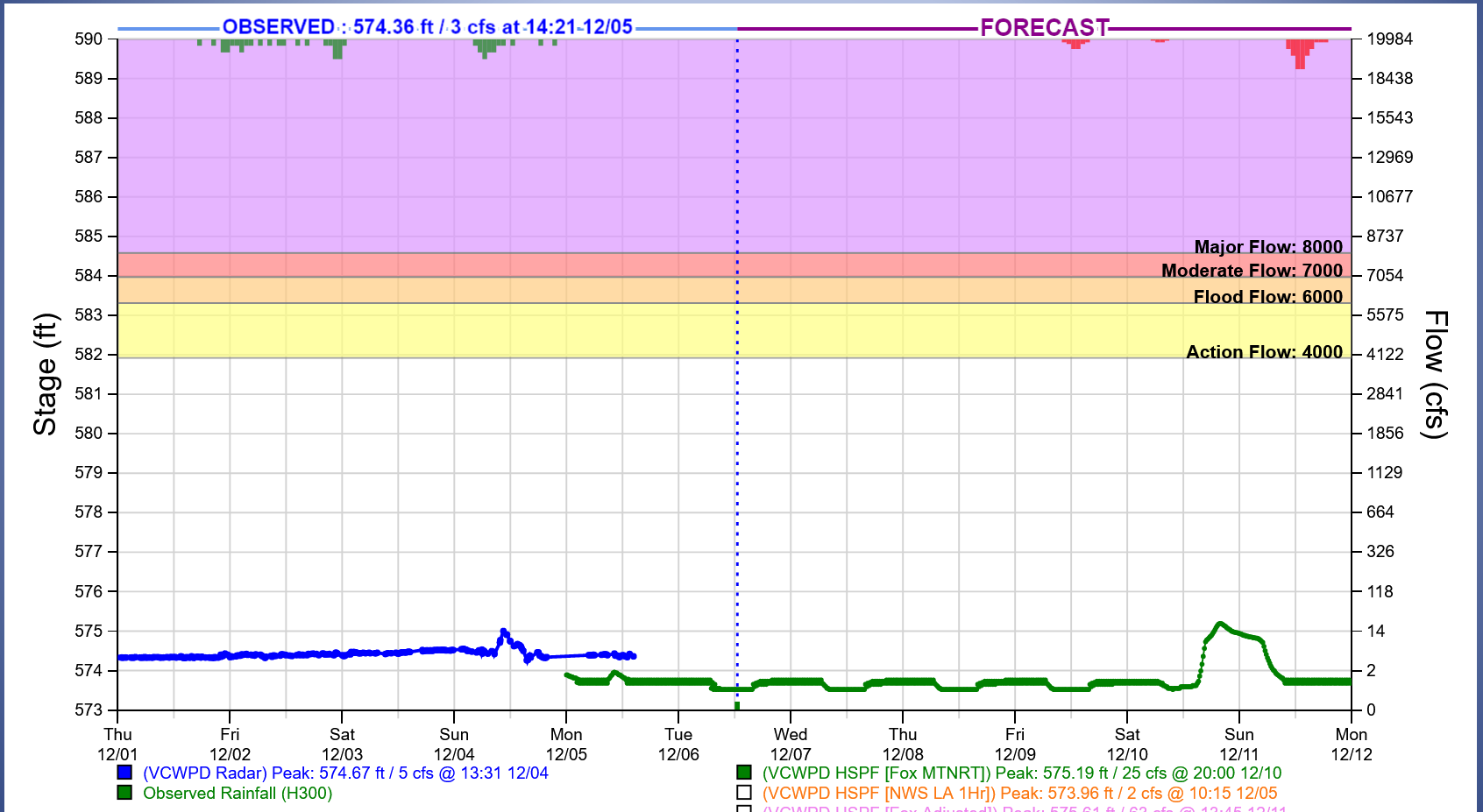


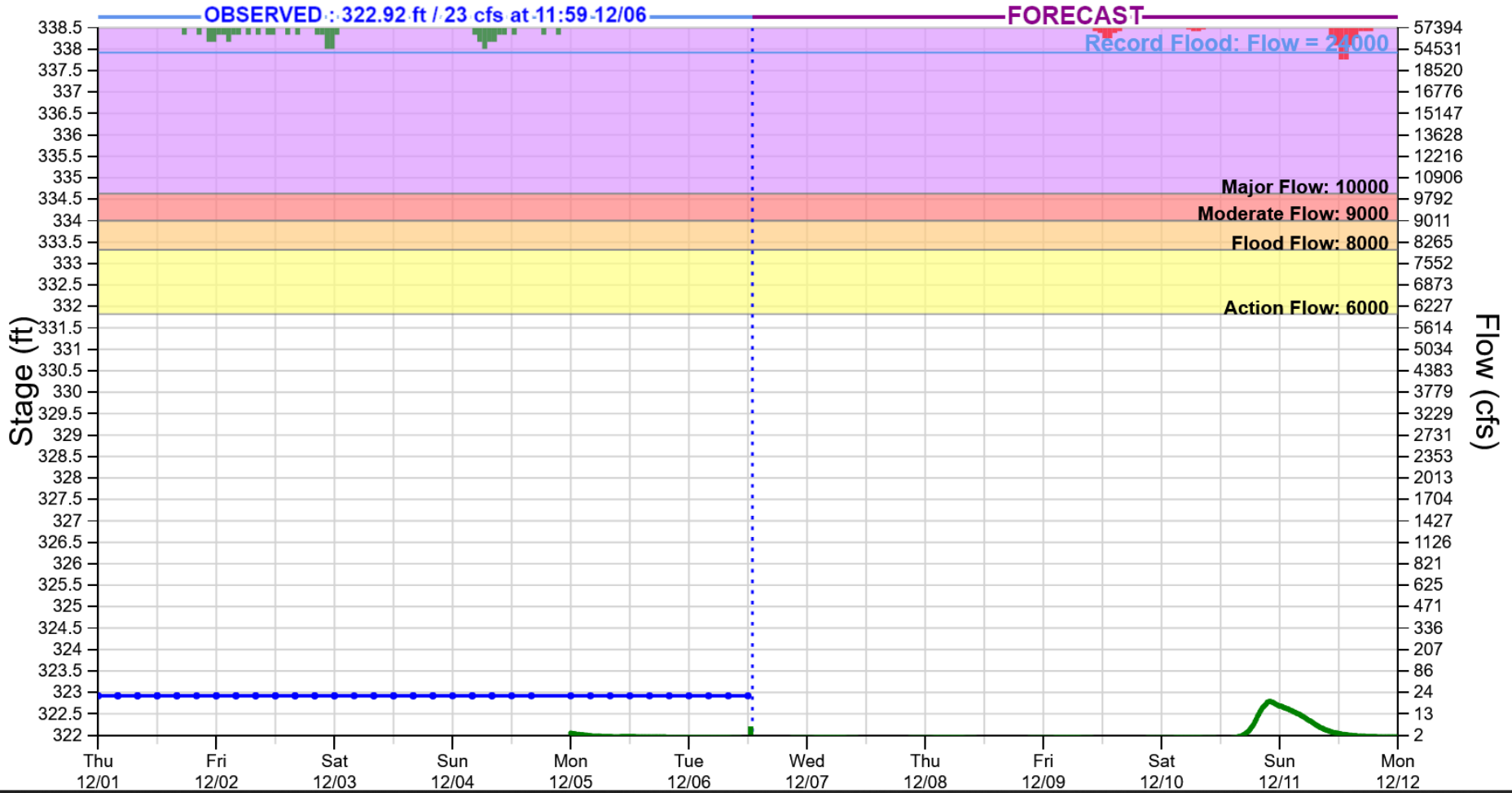






# SAC at Camp Comfort





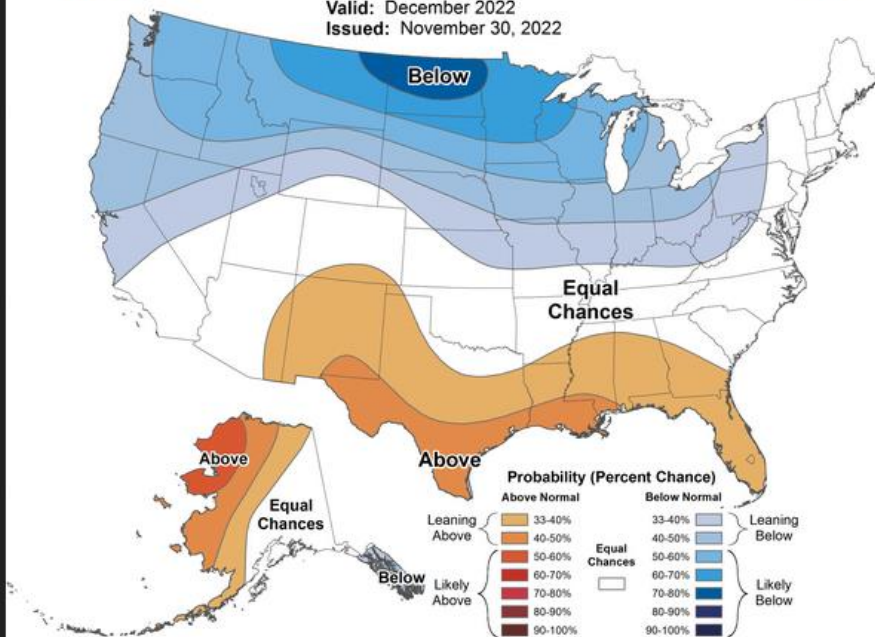






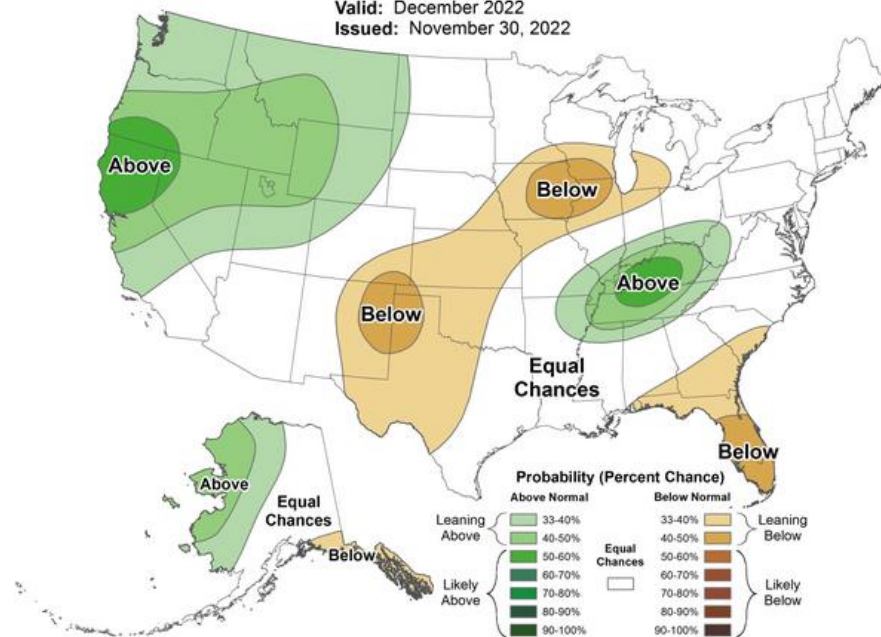
# Monthly Temperature Outlook

Valid: December 2022  
Issued: November 30, 2022



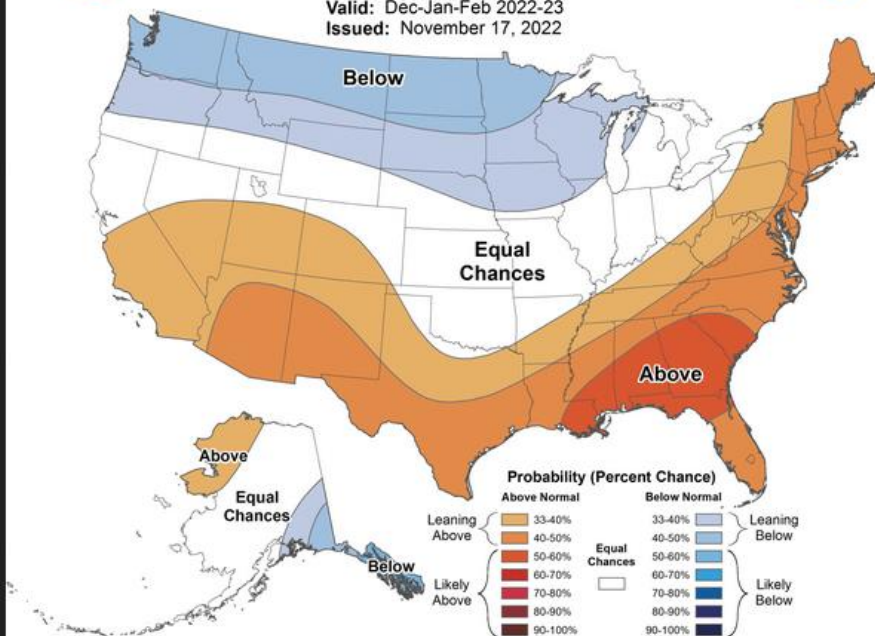
# Monthly Precipitation Outlook

Valid: December 2022  
Issued: November 30, 2022



# Seasonal Temperature Outlook

Valid: Dec-Jan-Feb 2022-23  
Issued: November 17, 2022



# Seasonal Precipitation Outlook

Valid: Dec-Jan-Feb 2022-23  
Issued: November 17, 2022

