

# Basin Status

OBGMA

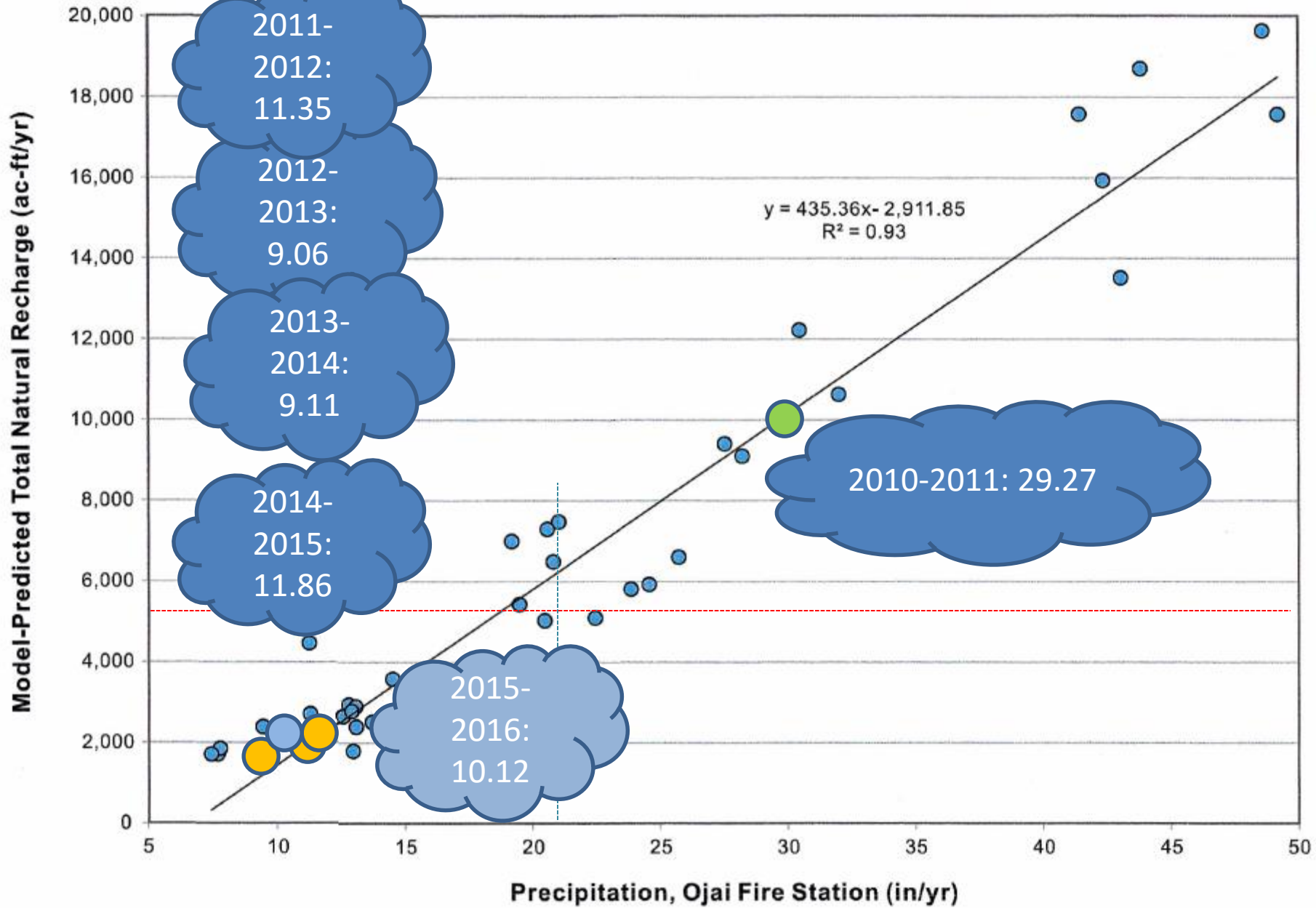
Jordan Kear, PG, CHG

30 June 2016



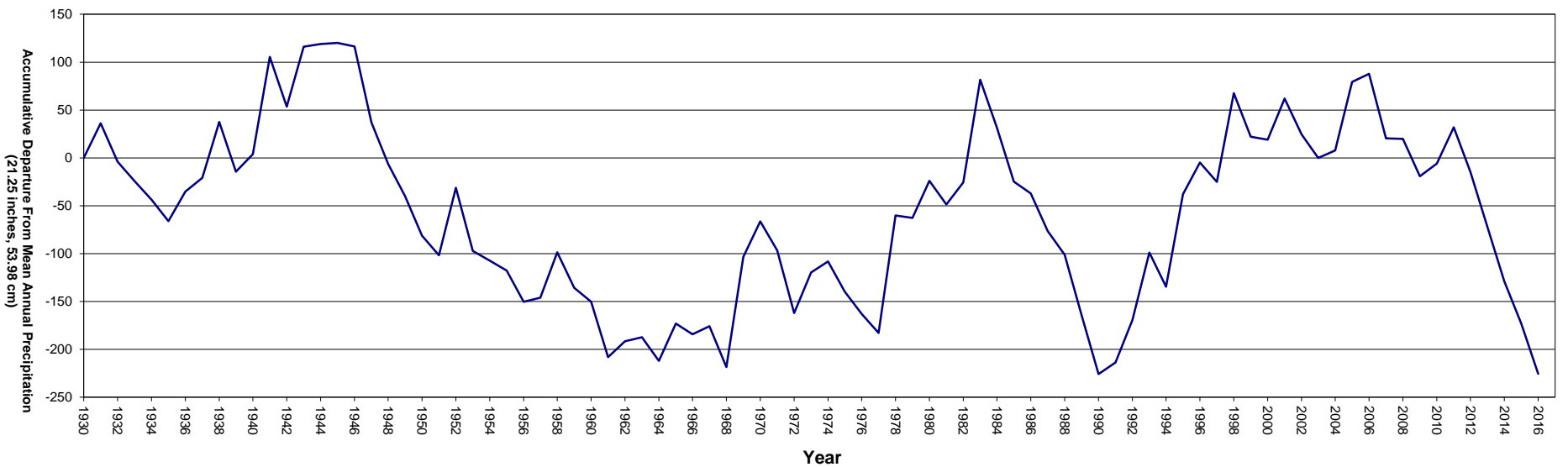
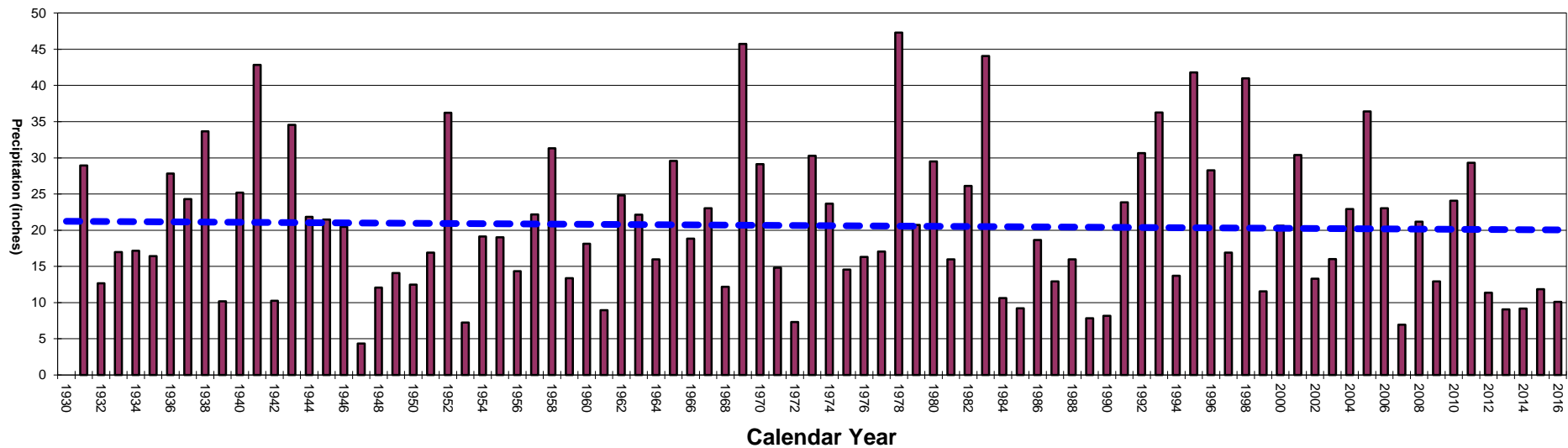
# Discussion

- Precipitation
- Basin Conditions
- Extraction Outlook and Recommendations

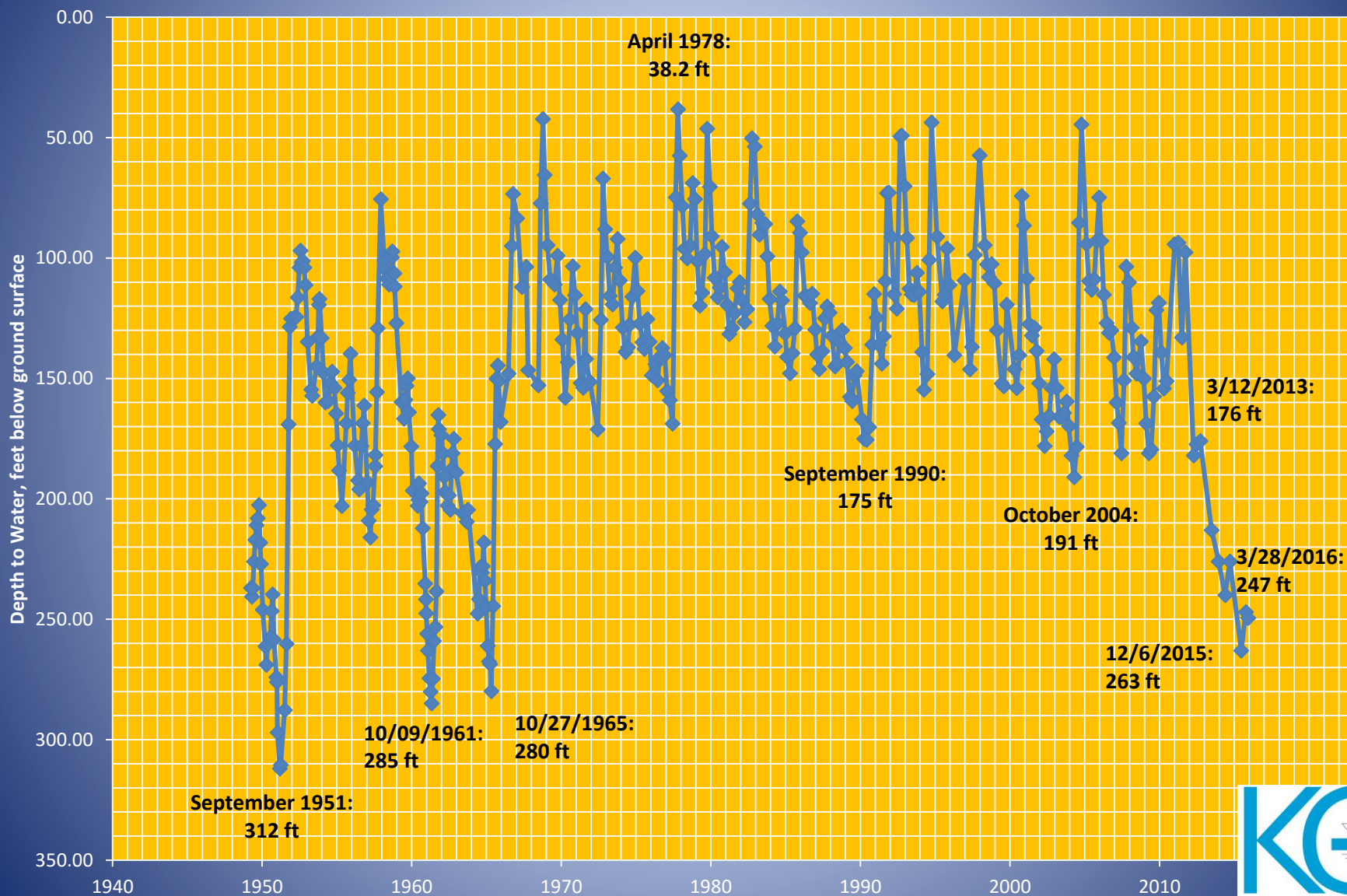


Rain Gauge Location: 34.4480 N 119.2300 W

Rain Gauge Elevation: 745 ft (227 m) above mean sea level



# Depth to Water: Ojai Basin Key Well 04N/22W-5L8 (Carne and Grand)



# Springtime High

## March 28, 2016

- 247 feet bgs in key well
- 39,067 acre-feet in storage
- 48.8 % Capacity
- Lowest condition in 50 years
- 1950-1952, 1960-1962, and 1965 were drier over period of record of key well

## 2016 Projection

- Similar use to 2015 would yield a depth of 284 feet in Key well in Fall 2016
- This would overtake 1965 for third lowest autumn nadir
- Still above 1961 (285) and 1951 (312 feet)

# Recommendations

## Conserve at or better than 2015

- Curb new plantings
- STUMP don't PUMP
- Rehabilitate wells for maximum efficiency
- Use Casitas water where possible

# Recommendations

## Well Drilling?

- Best wells historically drilled in times of worst drought
- Deeper aquifer “flushed”
- Developed better versus sanding zones
- No “unsustainable positives”



# Recommendations

## Management

- Recommended use
- Suggest to pumpers a quantification
- Explain benefits of conservation
- Long term sustainability