

Hydrostice

Ojai Basin conditions,
November-December 2024

OBGMA

Ojai, California

Jordan Kear, PG, CHG

05 December 2024

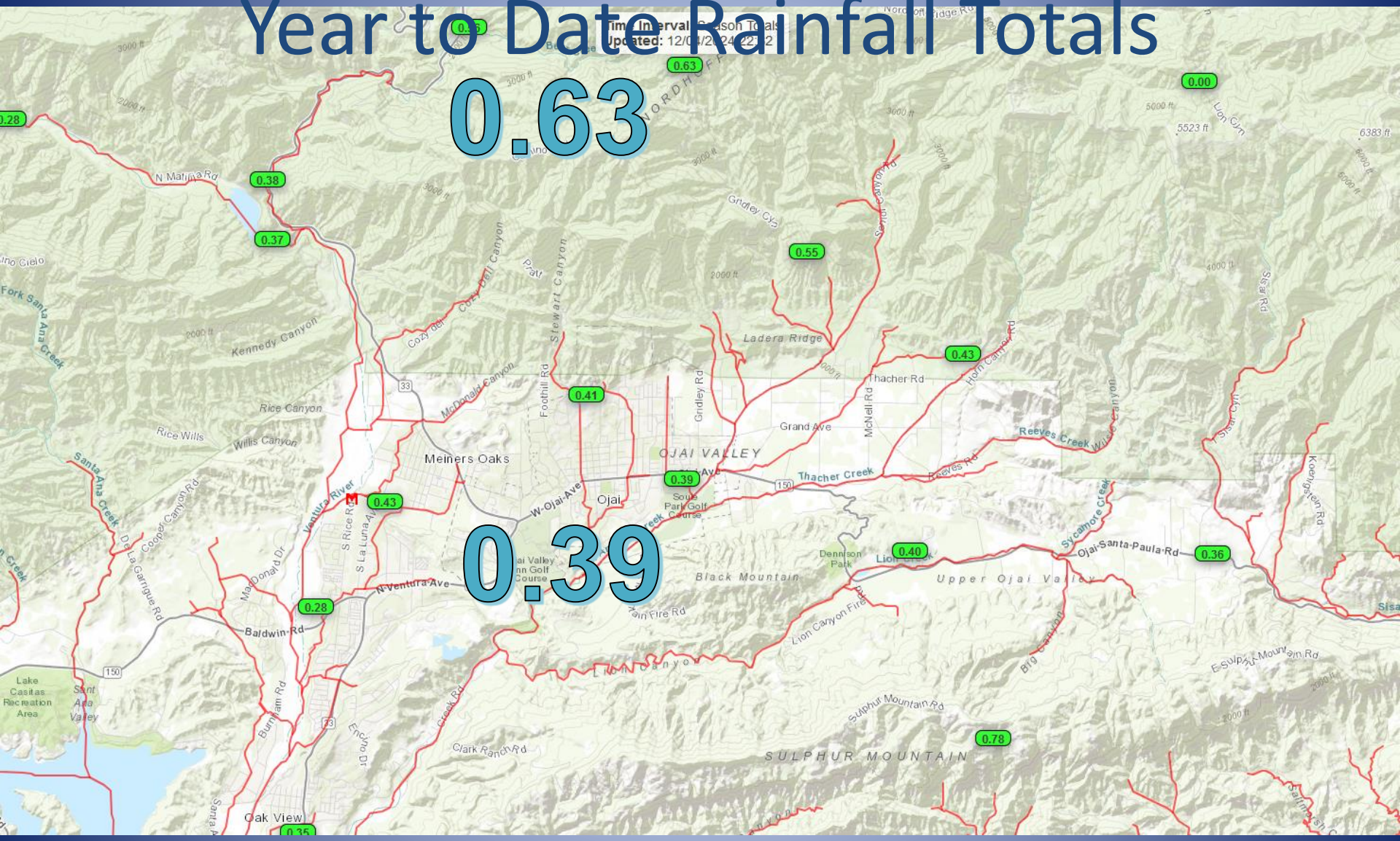


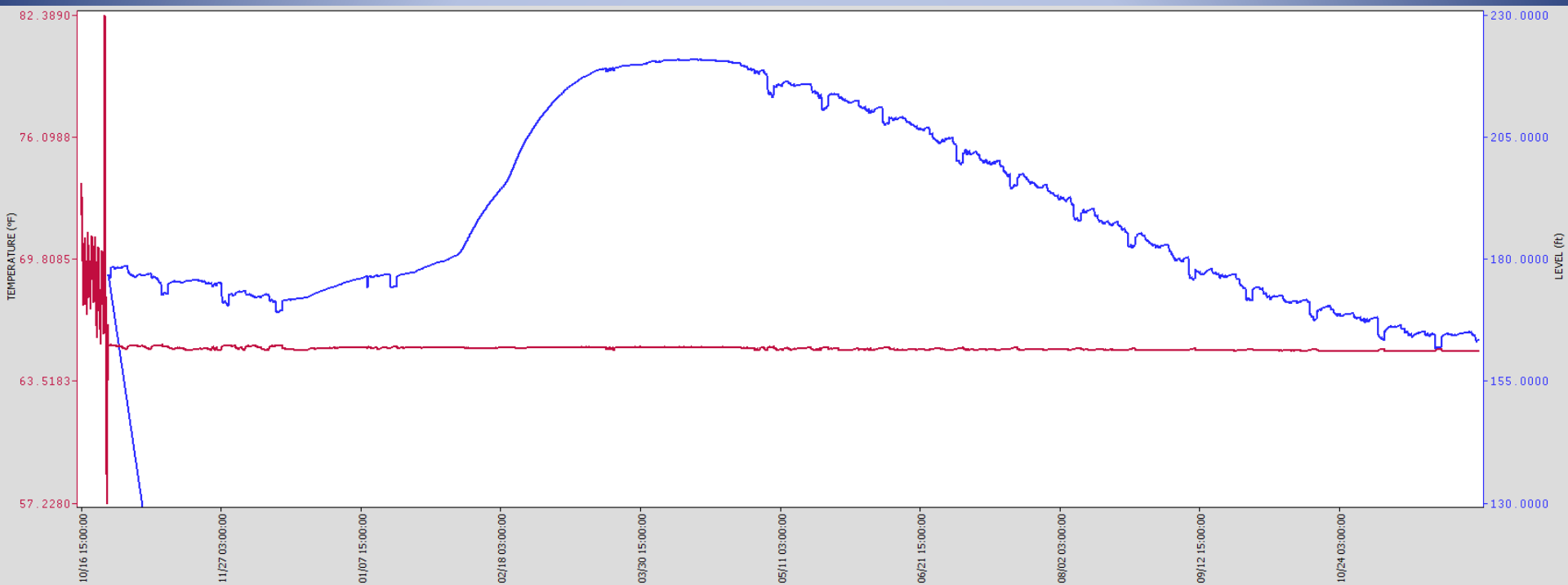
Year to Date Rainfall Totals

Time Interval: Season Totals
Updated: 12/01/24 22:12

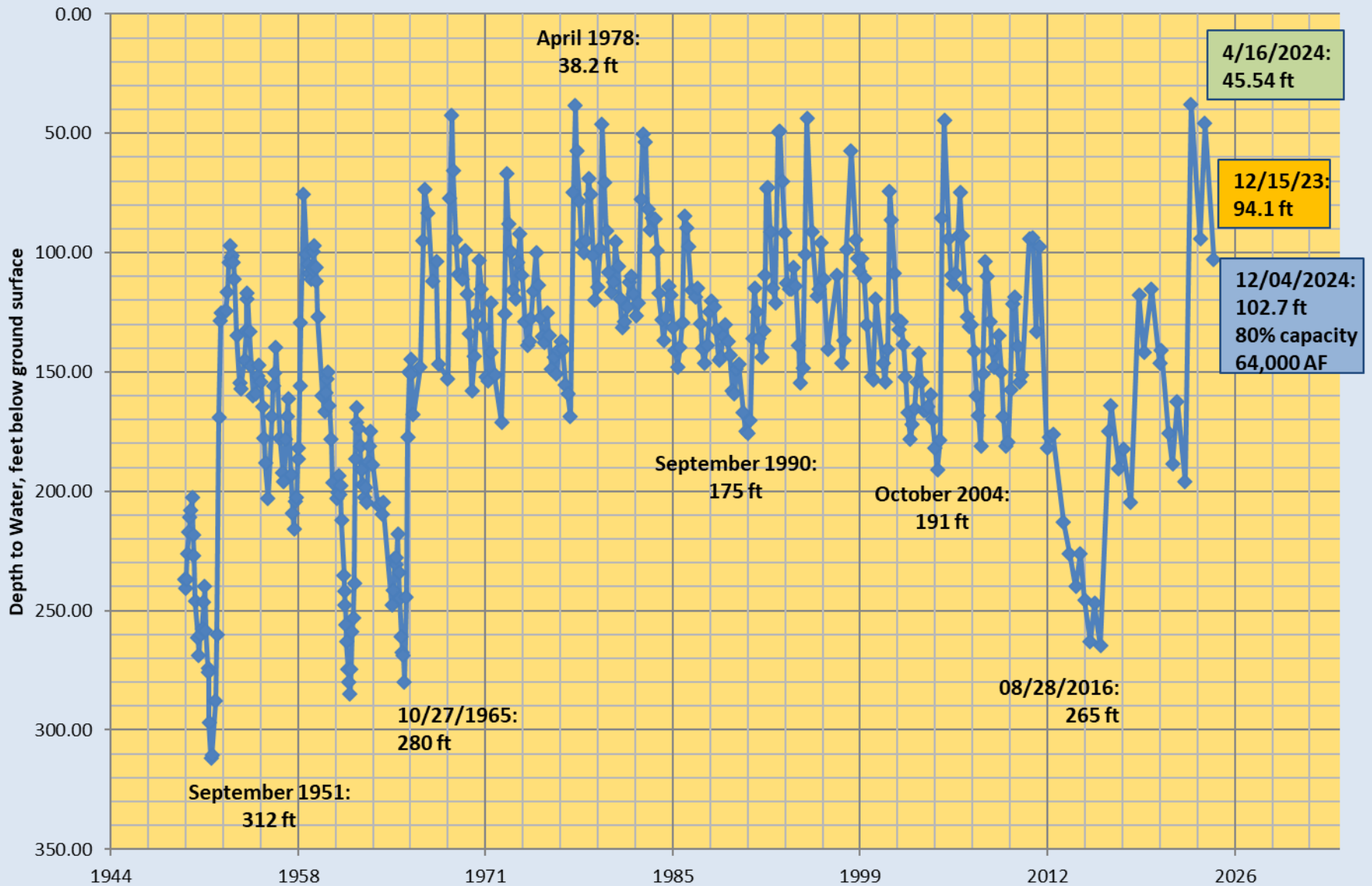
0.63

0.39



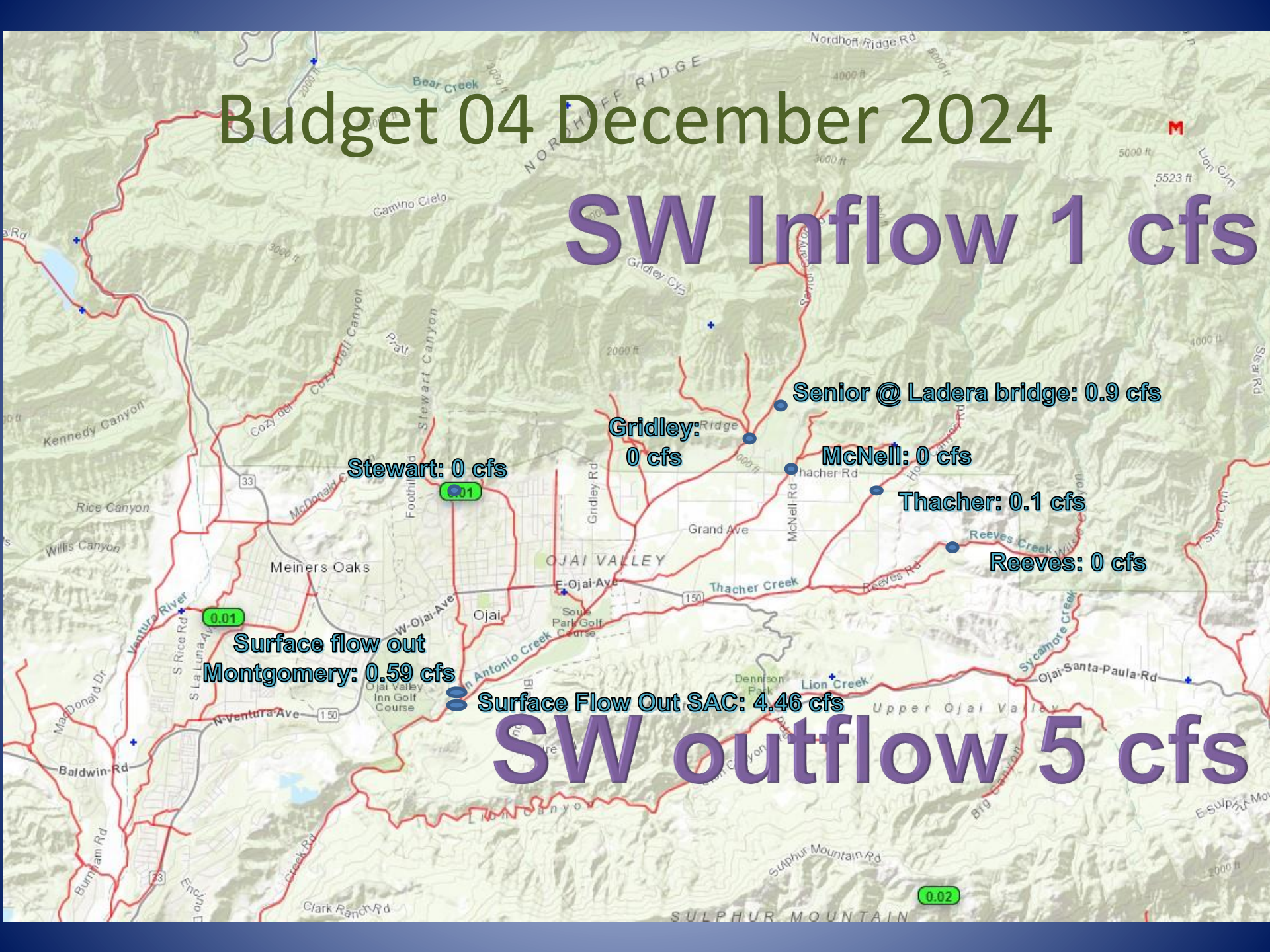


Depth to Water: Ojai Basin Key Well Area 04N/22W-5L8 & 5L5 (Carne and Grand)



Budget 04 December 2024

SW Inflow 1 cfs



Surface flow out
Montgomery: 0.59 cfs

Surface Flow Out SAC: 4.46 cfs

SW outflow 5 cfs



VENTURA RIVER VALLEY

OJAI VALLEY

SANTA ANA FAULT

STEWART CANYON

Ojai Basin

Ojai Basin
Outflow Point(s)



SAN ANTONIO CREEK

OBGMA
Jurisdiction

Consistent
bedrock
Exposure

Creek Road at Camp Comfort - County Gauge

CAMP COMFORT

Camp Comfort



UTILITY RD

Basin outflow
point - currently
flow over alluvium,
some subsurface flow
in known and defined channel





San Antonio Creek Flow
over Bedrock
through Camp Comfort

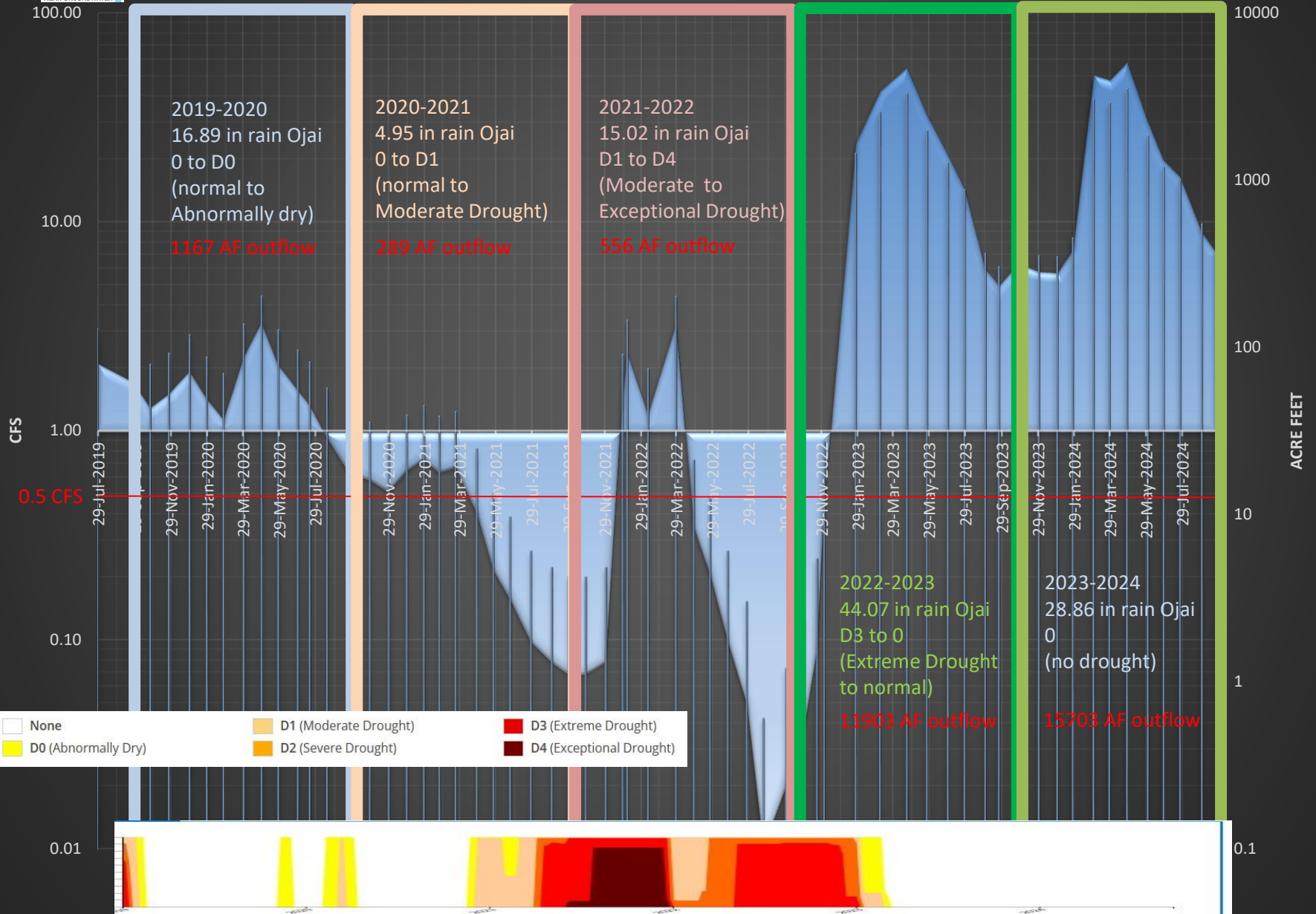


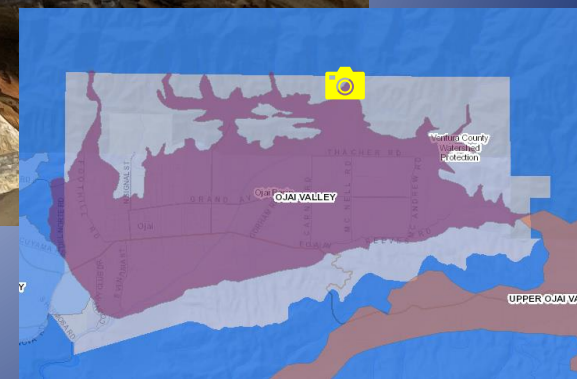
San Antonio Creek Outflow from Ojai Basin estimates 2019-2024

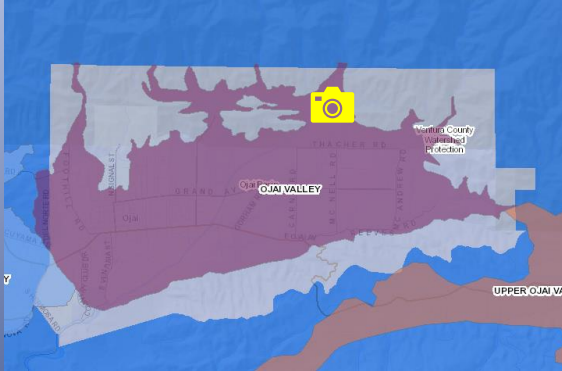


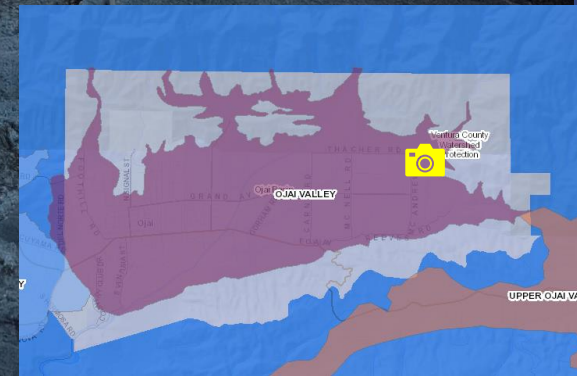


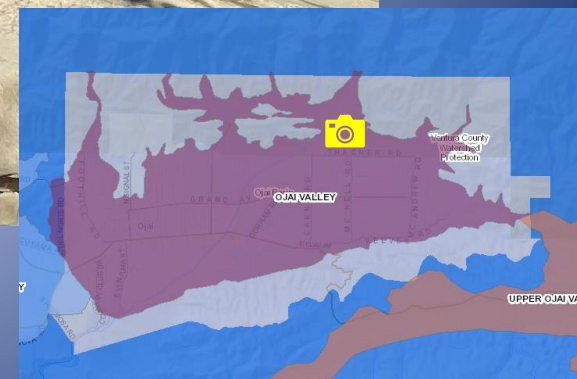
San Antonio Creek Outflow from Ojai Basin estimates 2019-2024





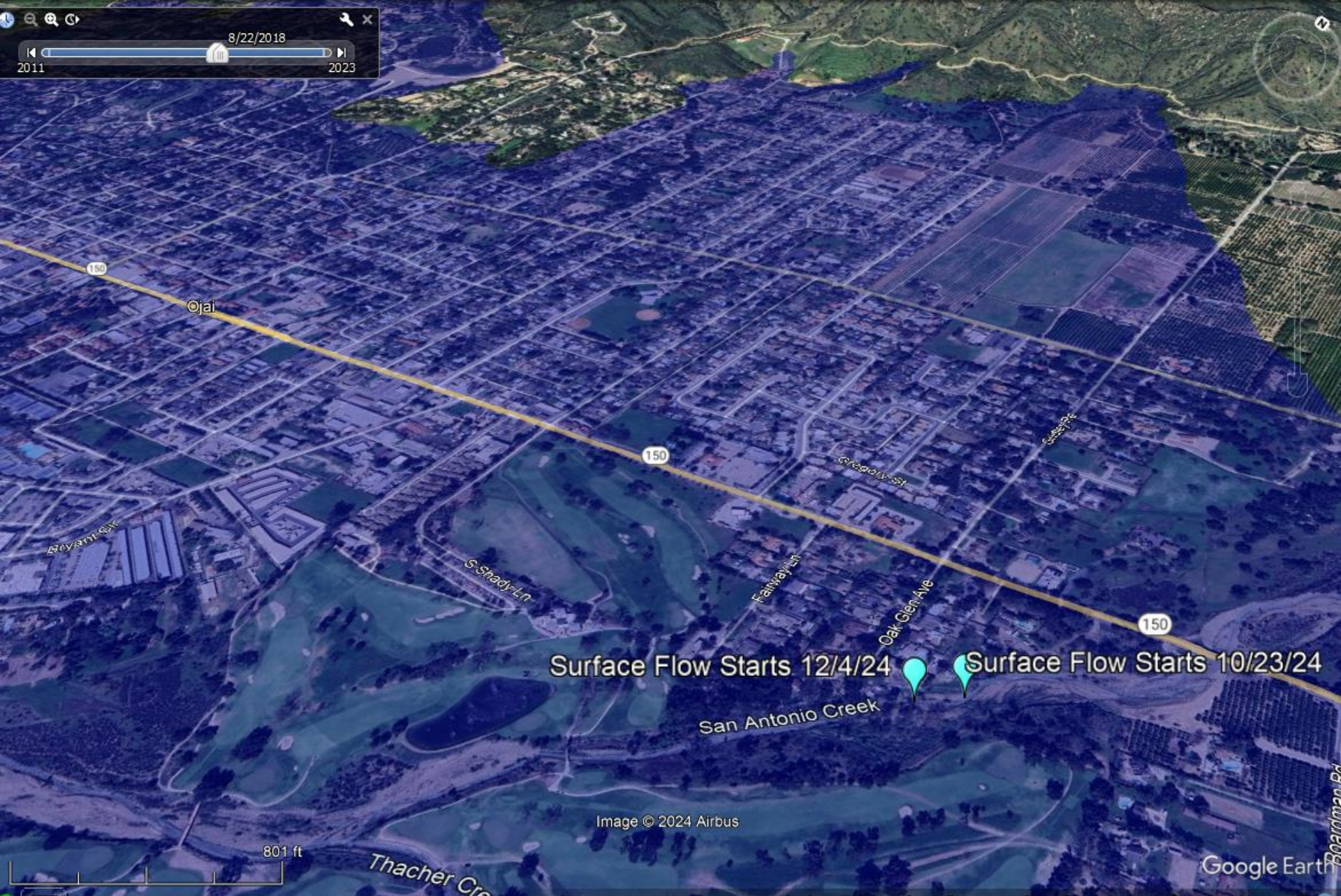








8/22/2018
2011 2023



Surface Flow Starts 12/4/24

Surface Flow Starts 10/23/24

San Antonio Creek

Image © 2024 Airbus

801 ft

Thacher Cr

Google Earth

184 ft







Seasonal Precipitation Outlook



Valid: Dec-Jan-Feb 2024-25

Issued: November 21, 2024

